



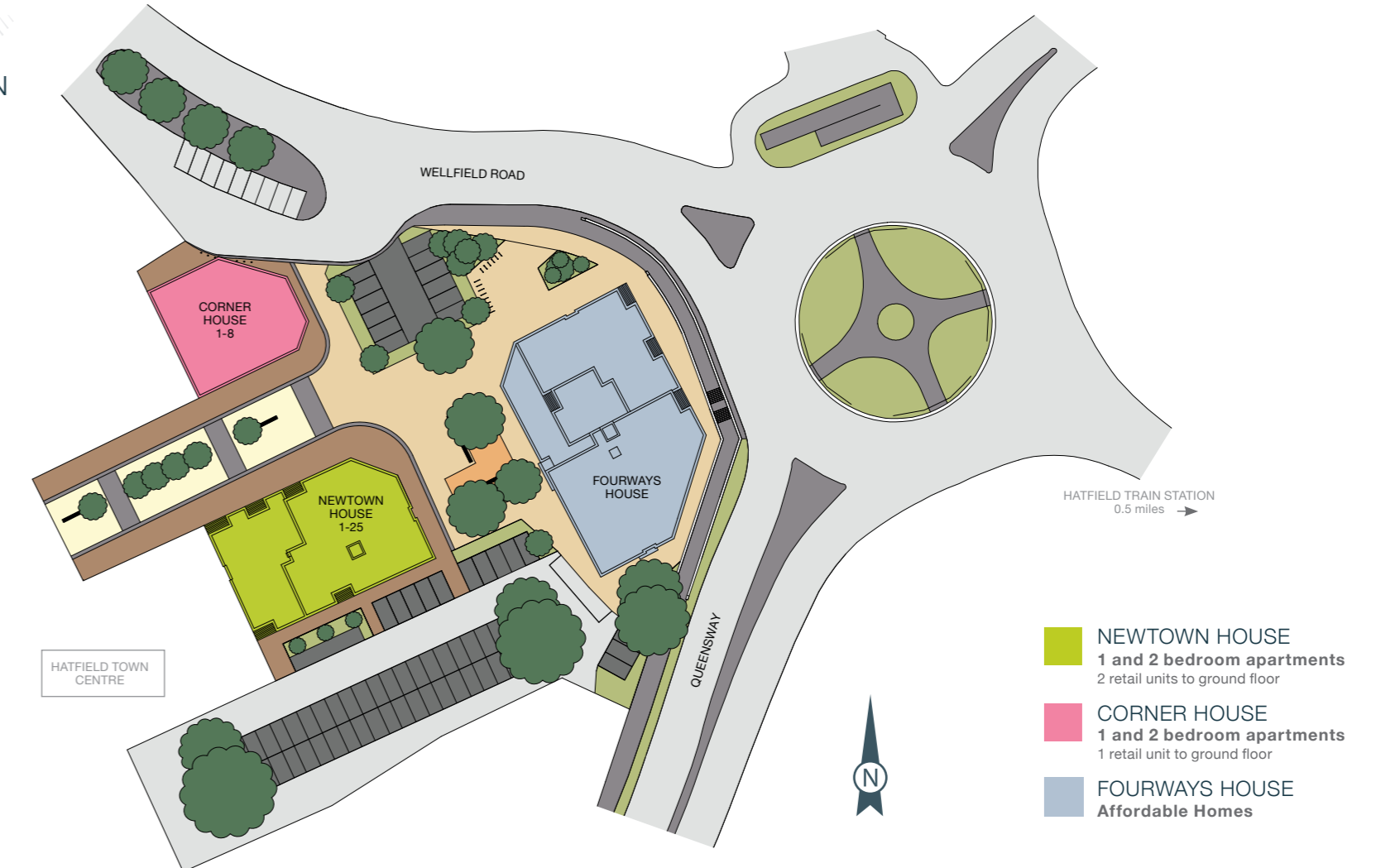
NEWTOWN HOUSE
AND CORNER HOUSE
1 & 2 Bedroom Apartments



CGIs are indicative only and elevations are subject to change, external finishes and features may vary.



VISTA
SITE PLAN



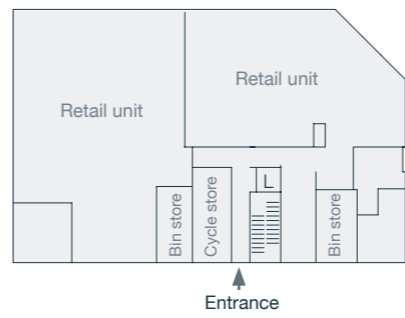
This development layout plan depicts the intended layout and development mix at the time of going to press, however those intentions may change and a purchaser cannot rely on the details shown on this plan. Landscaping shown is only indicative. Any queries should be raised through the conveyancing process in the usual way.

Correct at time of print

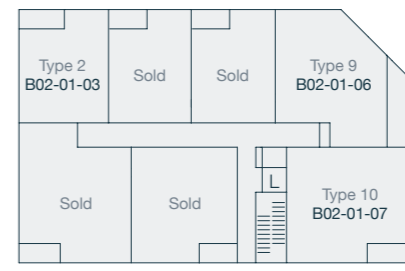


NEWTOWN HOUSE
BLOCK PLANS

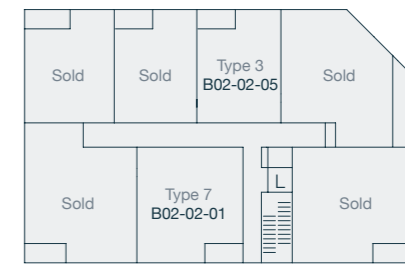
Ground Floor



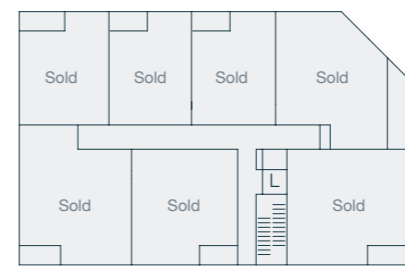
First Floor



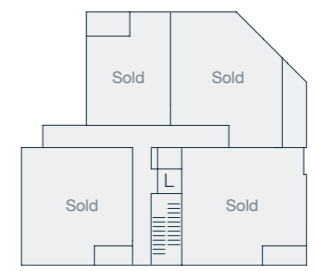
Second Floor



Third Floor

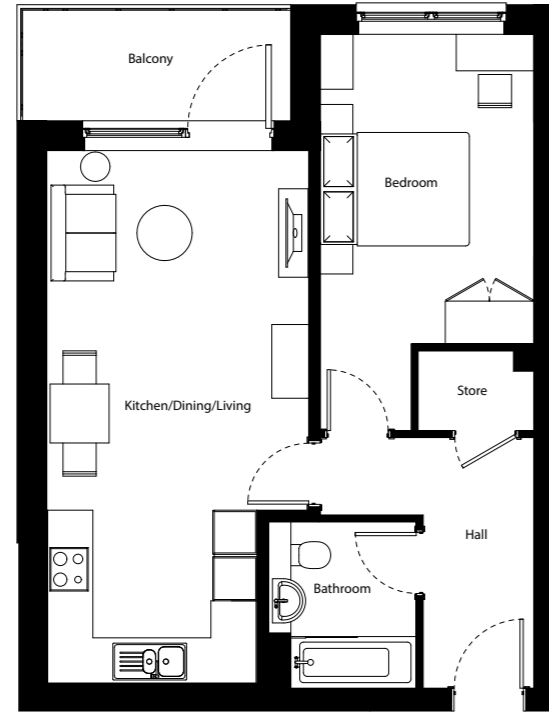


Fourth Floor



NEWTOWN HOUSE
APARTMENT TYPE 2

1 bedroom apartment
52.7sqm | 567sqft



Dimensions

Living/Dining/Kitchen 7236mm x 3553mm | 23'9" x 11'8"
Bedroom 1 4199mm x 2894mm | 13'9" x 9'6"

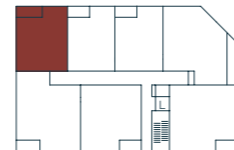
Plot numbers

B02-01-03

Floor

01

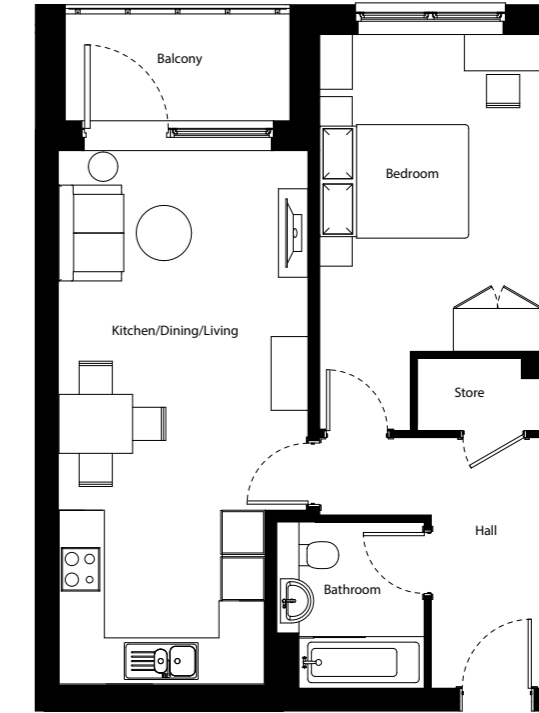
Floors 1-3



Customers should note the computer generated image shown is an illustration of Newtown House. External finishes, landscaping and roofing of final building may vary. Dimensions stated are maximum room measurements and within 50mm (2") but should not be used as a basis for furnishings, furniture or appliance spaces etc. Dimensions for such purposes must be verified against actual site measurements. Please check individual plot details with our sales team. L denotes Lift.

NEWTOWN HOUSE
APARTMENT TYPE 3

1 bedroom apartment
52.6sqm | 566sqft



Dimensions

Living/Dining/Kitchen 7236mm x 3387mm | 23'9" x 11'1"
Bedroom 1 4299mm x 3013mm | 14'1" x 9'11"

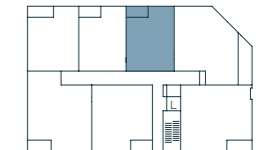
Plot numbers

B02-02-05

Floor

02

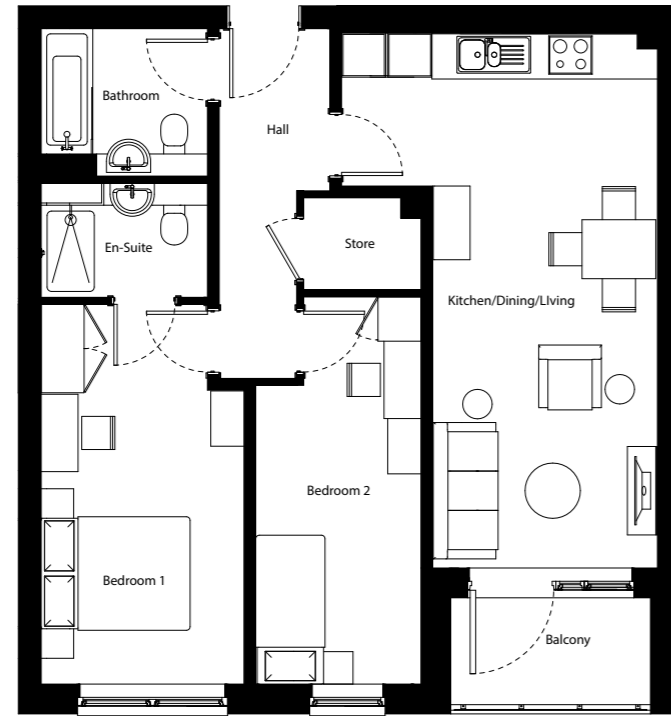
Floors 1-3



Customers should note the computer generated image shown is an illustration of Newtown House. External finishes, landscaping and roofing of final building may vary. Dimensions stated are maximum room measurements and within 50mm (2") but should not be used as a basis for furnishings, furniture or appliance spaces etc. Dimensions for such purposes must be verified against actual site measurements. Please check individual plot details with our sales team. L denotes Lift.

NEWTOWN HOUSE
APARTMENT TYPE 7

2 bedroom apartment
69.3sqm | 745sqft



Dimensions

Living/Dining/Kitchen 7274mm x 3049mm | 23'10" x 10'0"
Bedroom 1 5152mm x 2750mm | 16'11" x 9'0"
Bedroom 2 5252mm x 2241mm | 17'3" x 7'4"

Plot numbers

B02-02-01

Floor

02

Floors 1-3

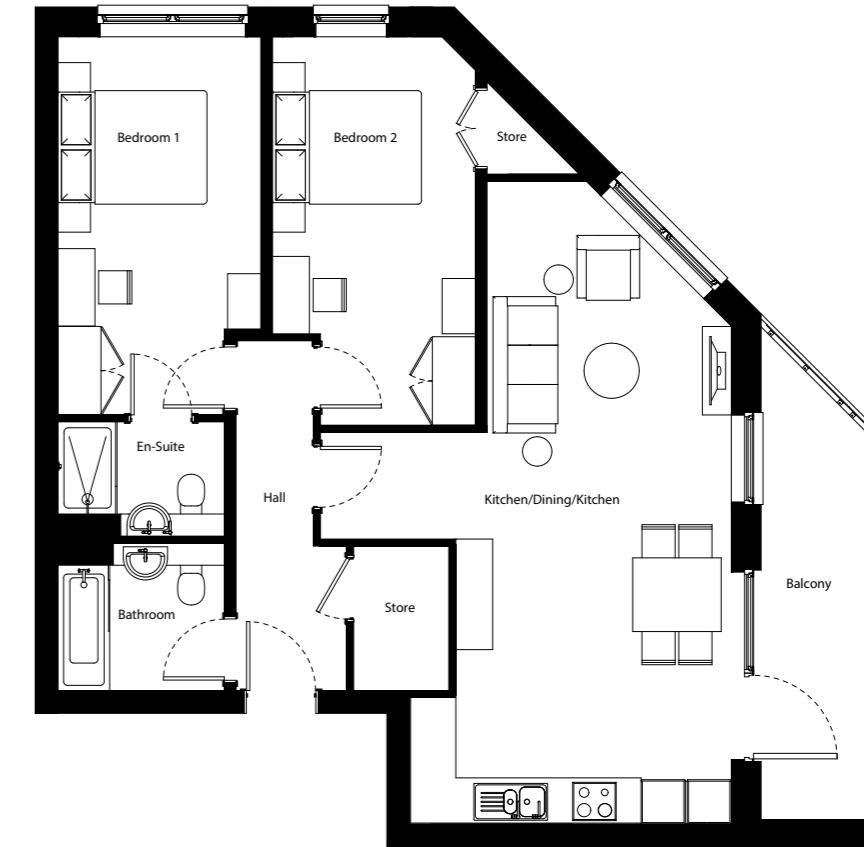


Customers should note the computer generated image shown is an illustration of Newtown House. External finishes, landscaping and roofing of final building may vary. Dimensions stated are maximum room measurements and within 50mm (2") but should not be used as a basis for furnishings, furniture or appliance spaces etc. Dimensions for such purposes must be verified against actual site measurements. Please check individual plot details with our sales team. L denotes Lift.

2B3P-04

NEWTOWN HOUSE
APARTMENT TYPE 9

2 bedroom apartment
81.2sqm | 874sqft



Dimensions

Living/Dining/Kitchen 8721mm x 3738mm | 28'7" x 12'3"
Bedroom 1 5129mm x 2750mm | 16'10" x 9'0"
Bedroom 2 5270mm x 2750mm | 17'3" x 9'0"

Plot numbers

B02-01-06

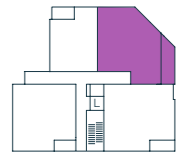
Floor

01

Floors 1-3



Floor 4

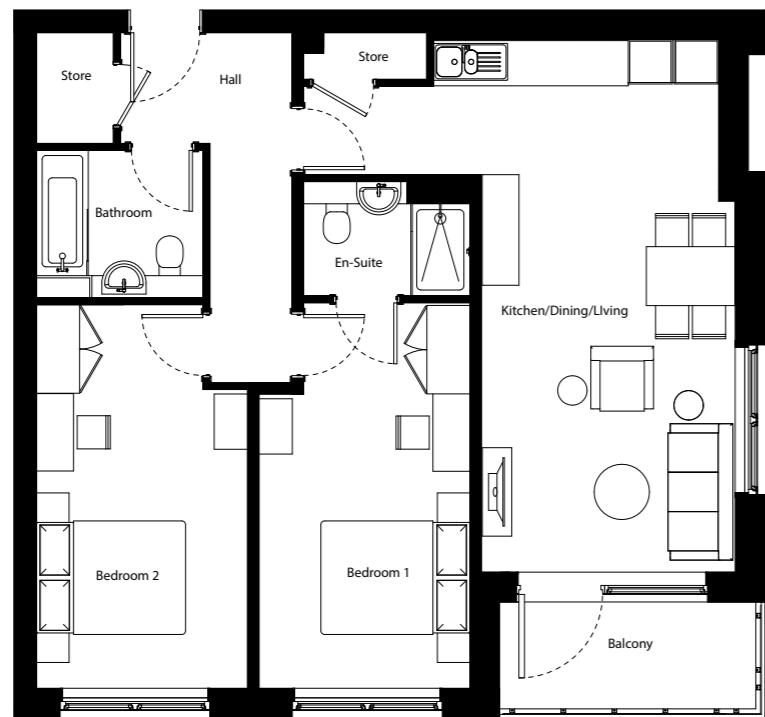


Customers should note the computer generated image shown is an illustration of Newtown House. External finishes, landscaping and roofing of final building may vary. Dimensions stated are maximum room measurements and within 50mm (2") but should not be used as a basis for furnishings, furniture or appliance spaces etc. Dimensions for such purposes must be verified against actual site measurements. Please check individual plot details with our sales team. L denotes Lift.

2B4P-03

NEWTOWN HOUSE
APARTMENT TYPE 10

2 bedroom apartment
78.1sqm | 841sqft



Dimensions

Living/Dining/Kitchen 7238mm x 3440mm | 23'9" x 11'3"
Bedroom 1 5228mm x 2858mm | 17'2" x 9'5"
Bedroom 2 5202mm x 2858mm | 17'1" x 9'5"

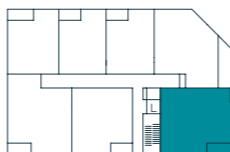
Plot numbers

B02-01-07

Floor

01

Floors 1-3



Floor 4



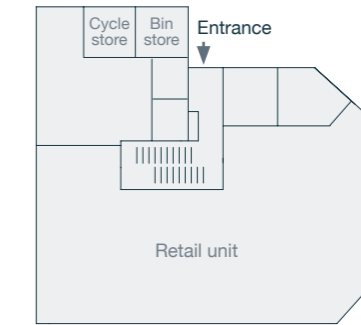
Customers should note the computer generated image shown is an illustration of Newtown House. External finishes, landscaping and roofing of final building may vary. Dimensions stated are maximum room measurements and within 50mm (2") but should not be used as a basis for furnishings, furniture or appliance spaces etc. Dimensions for such purposes must be verified against actual site measurements. Please check individual plot details with our sales team. L denotes Lift.



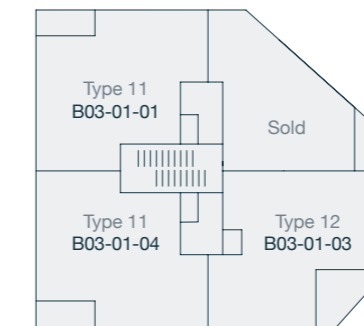


CORNER HOUSE BLOCK PLANS

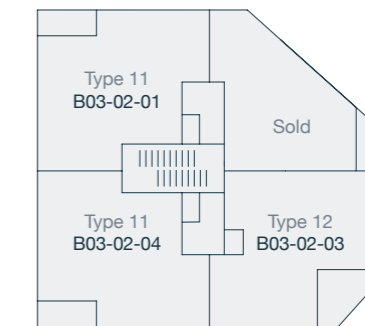
Ground Floor



First Floor



Second Floor



CORNER HOUSE
APARTMENT TYPE 11

2 bedroom apartment
71.2sqm | 765sqft



Dimensions

Living/Dining/Kitchen 7477mm x 4695mm | 24'6" x 15'5"
Bedroom 1 3995mm x 3275mm | 13'1" x 10'9"
Bedroom 2 4306mm x 2750mm | 14'2" x 9'0"

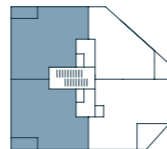
Plot numbers

B03-01-01
 B03-01-04*
 B03-02-01
 B03-02-04*

Floor

01
 01
 02
 02

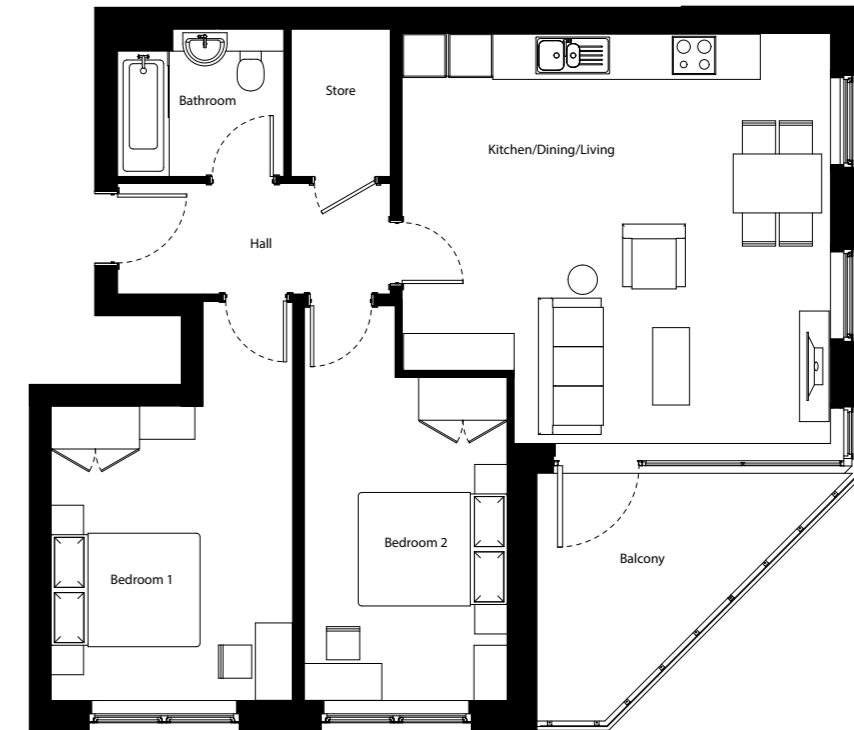
Floors 1-2



Customers should note the computer generated image shown is an illustration of Corner House. External finishes, landscaping and roofing of final building may vary. Dimensions stated are maximum room measurements and within 50mm (2") but should not be used as a basis for furnishings, furniture or appliance spaces etc. Dimensions for such purposes must be verified against actual site measurements. Please check individual plot details with our sales team. L denotes Lift. *denotes handed apartment

CORNER HOUSE
APARTMENT TYPE 12

2 bedroom apartment
74.7sqm | 803sqft



Dimensions

Living/Dining/Kitchen 5812mm x 5565mm | 19'1" x 18'3"
Bedroom 1 3995mm x 3277mm | 13'1" x 10'9"
Bedroom 2 4385mm x 2750mm | 14'4" x 9'0"

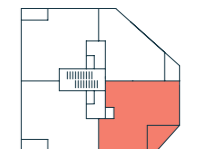
Plot numbers

B03-01-03
 B03-02-03

Floor

01
 02

Floors 1-2



Customers should note the computer generated image shown is an illustration of Corner House. External finishes, landscaping and roofing of final building may vary. Dimensions stated are maximum room measurements and within 50mm (2") but should not be used as a basis for furnishings, furniture or appliance spaces etc. Dimensions for such purposes must be verified against actual site measurements. Please check individual plot details with our sales team. L denotes Lift.



SPECIFICATION

APARTMENTS

Lovell Homes come with a high specification included as standard, because we know the small things can make a big difference. To guarantee a quality finish for your home we have partnered with some of the most sought-after brands in interiors.

Kitchen

- Indigo wall and base units
- Concrete effect worktops
- Stainless steel splashback
- Stainless steel bowl sink
- Zanussi double oven
- Zanussi ceramic 4 zone hob
- Telescopic integrated cooker hood
- Zanussi integrated fridge freezer
- Zanussi integrated dishwasher
- Zanussi integrated washer/dryer
- Chrome downlighters
- LED under cupboard lighting

Bathroom

- Ideal Standard white sanitaryware with chrome brassware
- Ceramic tiles applied around sanitaryware
- Shaver socket
- Thermostatic shower
- Heated towel rail
- Chrome downlighters

En-Suites

- Ideal Standard white sanitaryware with chrome brassware
- Ceramic tiles. Fully tiled shower cubicle and splash back to wash hand basin
- Thermostatic shower
- Towel rail
- Chrome downlighters

Internal and decoration

- White paint to walls and ceiling
- White satinwood finish to internal joinery
- Urban Salvaged Timber Amtico flooring throughout
- Double glazed Upvc windows
- Pre fitted blinds to all windows

External

- Bike store
- Recycling Bin enclosure

Heating, Electrical and Security

- NILAN Unit - an electrically powered energy-efficient heating, hot water and ventilation system
- Underfloor heating to all rooms
- Video/audio access control
- BT connection points to lounge and master bedroom
- TV aerial outlet and Sky Q to lounge
- Smoke detector
- Carbon monoxide detector
- 10 year NHBC Warranty

T: 01707 524 379
vistahatfield.co.uk



Specification correct at time of print however may change at any time - please speak to Sales Executive for confirmation.



LOVELL
HOMES

A MORGAN SINDALL GROUP COMPANY